

*Ghanem Holdings Office Building*

---



*Ghanem Al Thani Holdings W.L.L.*

P.O BOX.5319 – DOHA – QATAR



# **GATH OFFICE BUILDING**

A PROJECT OF HE SH. GHANEM BIN ALI AL THANI

Prepared By:

GATH Project Office

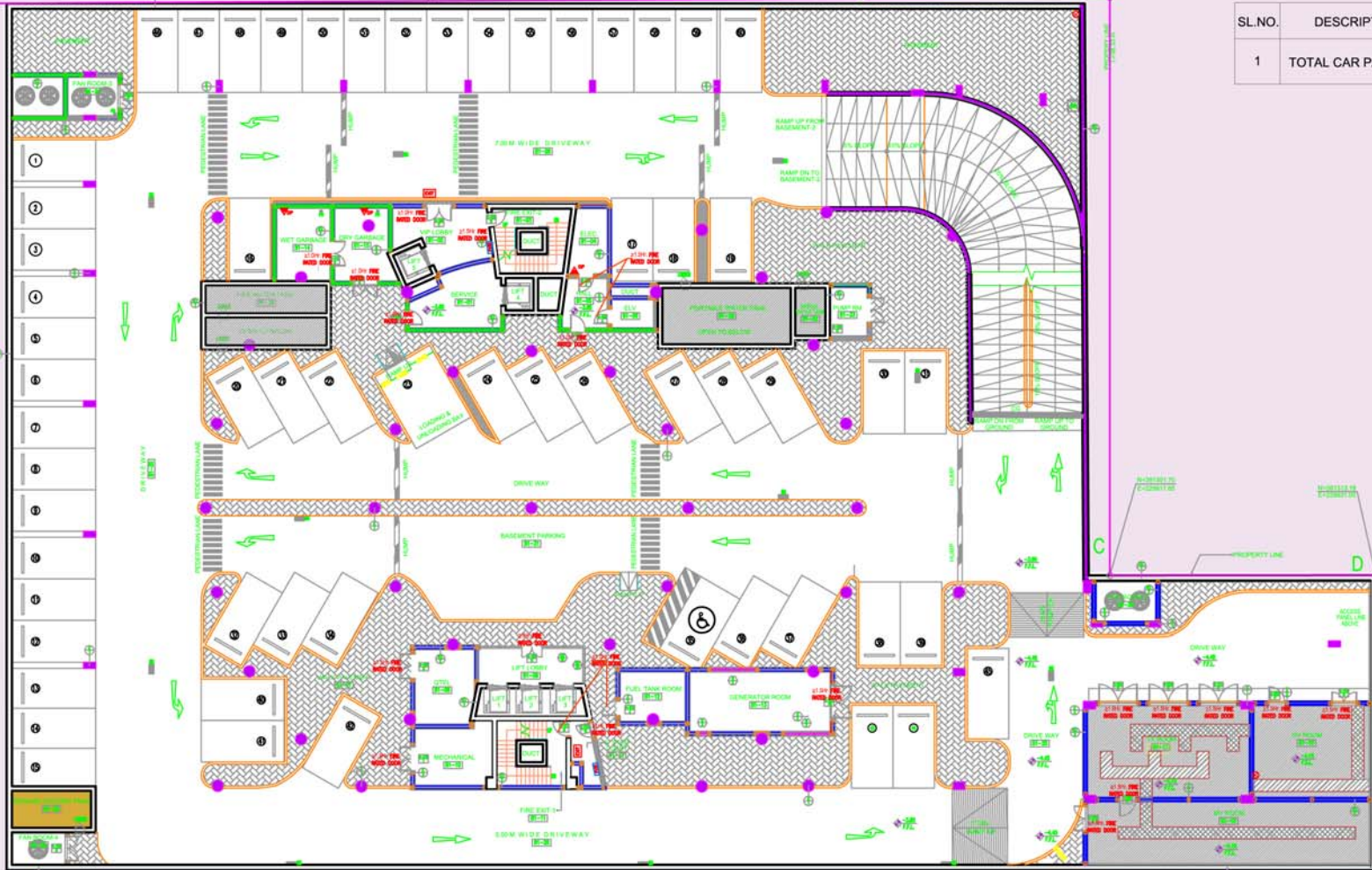
## GHANEM HOLDINGS OFFICE BUILDING

### LEASABLE AREA STATEMENT

SL.N O.	DESCRIPTION	LEASABLE AREA IN SQ.M	TOTAL LEASABLE AREA IN SQ.M	REMARKS
<b>GROUND FLOOR &amp; MEZZANINE FLOOR</b>				
	RESTAURANT 1 (GF)	258	504	
	RESTAURANT 1 (MF)	246		
	RESTAURANT 2 (GF)	236	485	
	RESTAURANT 2 (MF)	249		
	RESTAURANT 3 (GF)	175	343	
	RESTAURANT 3 (MF)	168		
	CAFETERIA 1 (GF)	136	136	
	CAFETERIA 2 (GF)	181	181	
	RESTAURANT 4 (MF)	306	306	
<b>GROUND AND MEZZANINE FLOOR COMMERCIAL AREA</b>			<b>1955</b>	
<b>FIRST FLOOR</b>				
	OFFICE SPACE 1	527	1036	
	OFFICE SPACE 2	509		
<b>SECOND FLOOR</b>				
	OFFICE SPACE 1	543	1066	
	OFFICE SPACE 2	523		
<b>THIRD FLOOR</b>				
	OFFICE SPACE 1	653	1198	
	OFFICE SPACE 2	545		
<b>FOURTH FLOOR</b>				
	OFFICE SPACE 1	638	1173	
	OFFICE SPACE 2	535		
<b>FIFTH FLOOR</b>				
	OFFICE SPACE 1	598	1102	
	OFFICE SPACE 2	504		
<b>1st FLOOR TO 5TH FLOOR OFFICE</b>			<b>5575</b>	
<b>SIXTH FLOOR</b>				
	OFFICE SPACE 1	453	816	RESERVED FOR GATH OFFICE
	OFFICE SPACE 2	363		
<b>SEVENTH FLOOR</b>				
	OFFICE SPACE 1	285	625	RESERVED FOR GATH OFFICE
	OFFICE SPACE 2	340		
<b>TOTAL LEASABLE AREA</b>			<b>8971</b>	
<b>CAR PARKINGS</b>				
BASEMENT 2 - 72 NOS			72 NOS	
BASEMENT 1 - 60 NOS			60 NOS	
GROUND FLOOR - 50 NOS			50 NOS	
<b>TOTAL CAR PARKINGS</b>			<b>182 NOS</b>	



SL.NO.	DESCRIPTION	NUMBERS
1	TOTAL CAR PARKING	60 NOS



**BASEMENT 1 FLOOR PLAN**



*Ghanem Al Thani Holdings WLL*  
P.O.BOX-5319 - DOHA-QATAR  
TEL-44428201 - FAX-44445248

**GHANEM HOLDINGS OFFICE BUILDING**

**TITLE BASEMENT 1 FLOOR PLAN**

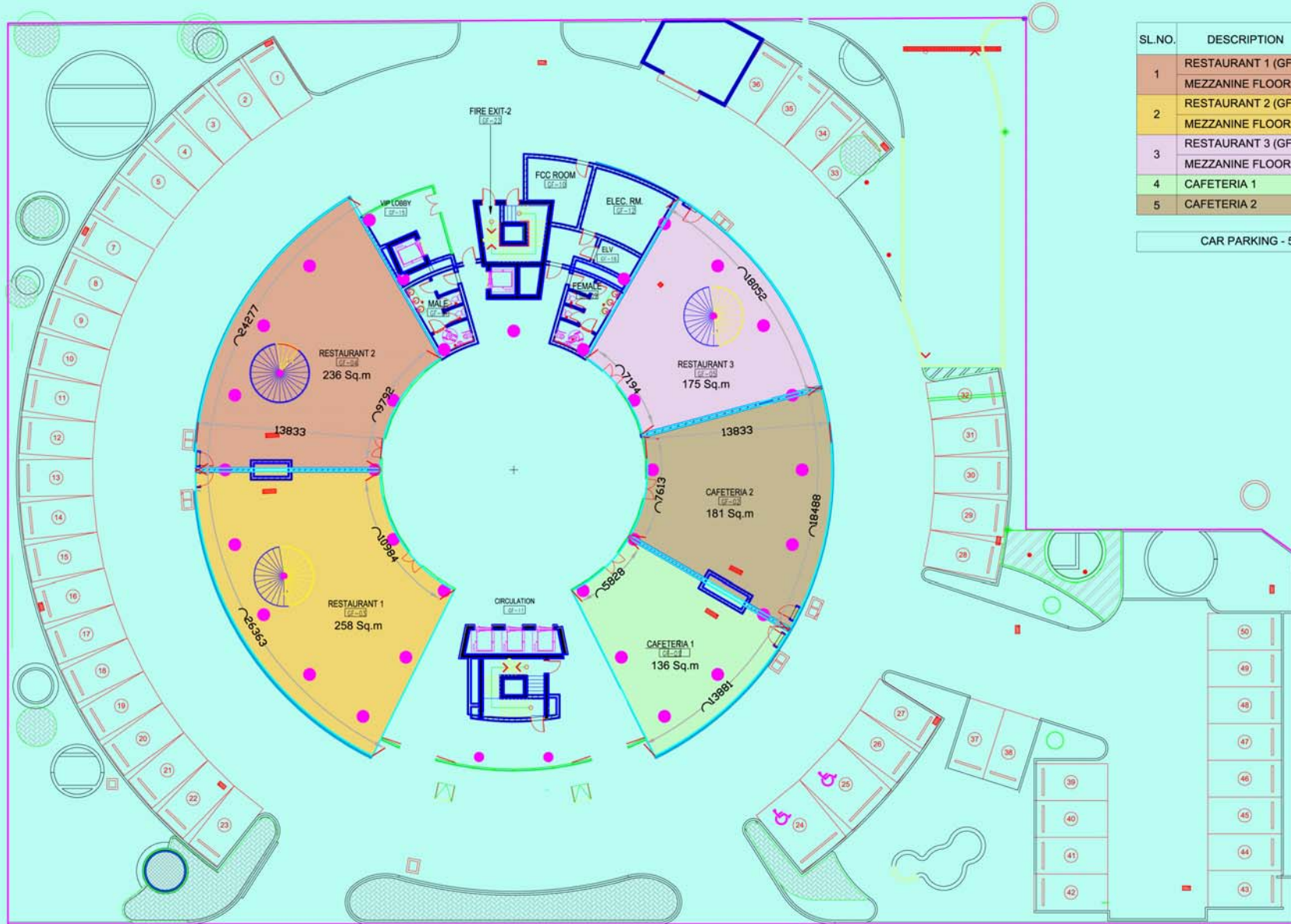
PROJ.NO. 00000 DRG.NO. A-A1-IF-02

SCALE 1 / 100 DRN.BY SCR

DATE 09-02-13 CKD.BY RV

D:\GHIGATH OFFICE BLDG\PRESANTATION 06-02-13

REV.NO	DATE	REVISION



SL.NO.	DESCRIPTION	AREA-SQ.M
1	RESTAURANT 1 (GF)	258
	MEZZANINE FLOOR	246
2	RESTAURANT 2 (GF)	236
	MEZZANINE FLOOR	249
3	RESTAURANT 3 (GF)	175
	MEZZANINE FLOOR	168
4	CAFETERIA 1	136
5	CAFETERIA 2	181

CAR PARKING - 50 NOS

### GROUND FLOOR PLAN



*Ghanem Al Thani Holdings WLL*  
 P.O.BOX-5319 - DOHA-QATAR  
 TEL-44428201 - FAX-44445248

#### GHANEM HOLDINGS OFFICE BUILDING

TITLE  
**GROUND FLOOR PLAN**

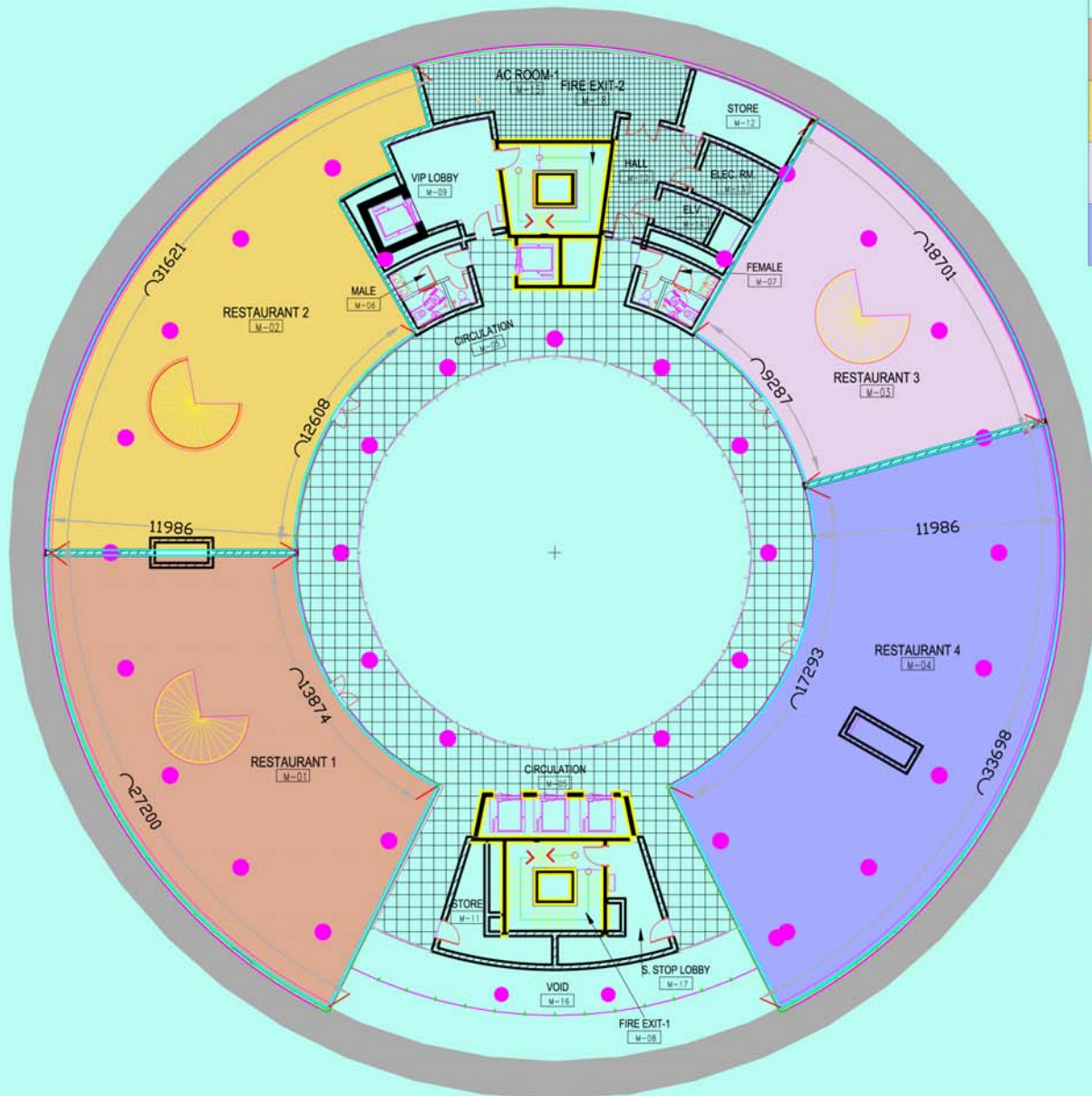
PROJ.NO. 00000 DRG.NO. A-A1-IF-03

SCALE 1 / 100 DRN.BY SCR

DATE 09-02-13 CKD.BY RV

D:\GHIGATH OFFICE BLDG\PRESENTATION 06-02-13

REV.NO	DATE	REVISION



SL.NO.	DESCRIPTION	AREA-SQ.M
1	RESTAURANT 1 (GF)	258
	MEZZANINE FLOOR	246
2	RESTAURANT 2 (GF)	236
	MEZZANINE FLOOR	249
3	RESTAURANT 3 (GF)	175
	MEZZANINE FLOOR	168
5	RESTAURANT 4 (MF)	306

**MEZZANINE FLOOR PLAN**

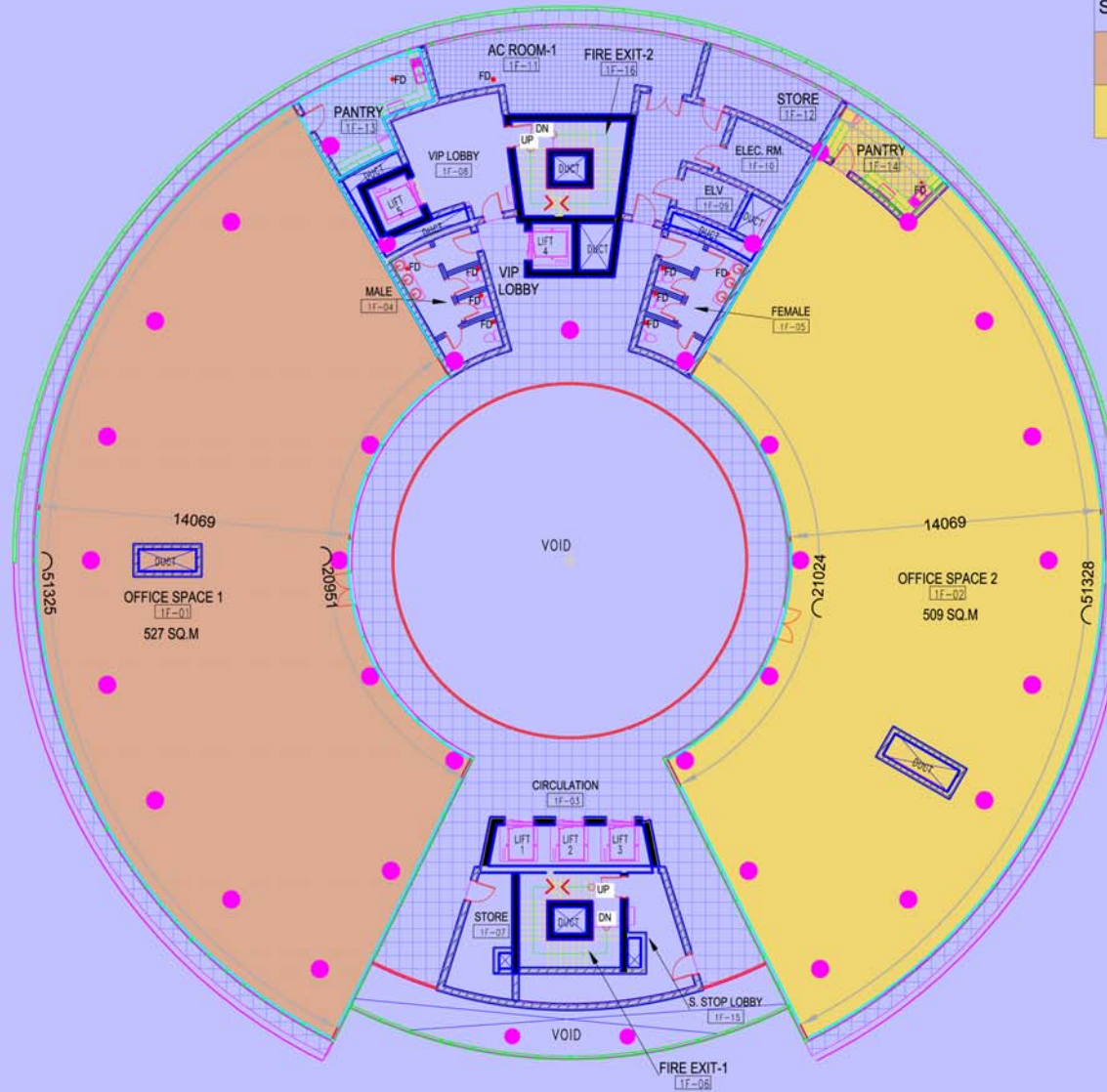
  
**Ghanem Al Thani Holdings WLL**  
 P.O.BOX-5319 - DOHA-QATAR  
 TEL-44428201 - FAX-44445248

<b>GHANEM HOLDINGS OFFICE BUILDING</b>			
<b>TITLE</b> MEZZANINE FLOOR PLAN			
PROJ.NO.	00000	DRG.NO.	A-A1-IF-04

SCALE	1 / 100	DRN.BY	SCR
DATE	09-02-13	CKD.BY	RV
D:\GHIGATH OFFICE BLDG\PRESENTATION 06-02-13			

REV.NO	DATE	REVISION

SL.NO.	DESCRIPTION	AREA-SQ.M
1	OFFICE SPACE 1	527
2	OFFICE SPACE 2	509



### FIRST FLOOR PLAN



*Ghanem Al Thani Holdings WLL*

P.O.BOX-5319 - DOHA-QATAR  
TEL-44428201 - FAX-44445248

**GHANEM HOLDINGS OFFICE BUILDING**

**TITLE FIRST FLOOR PLAN**

PROJ.NO. 00000 DRG.NO. A-A1-1F-05

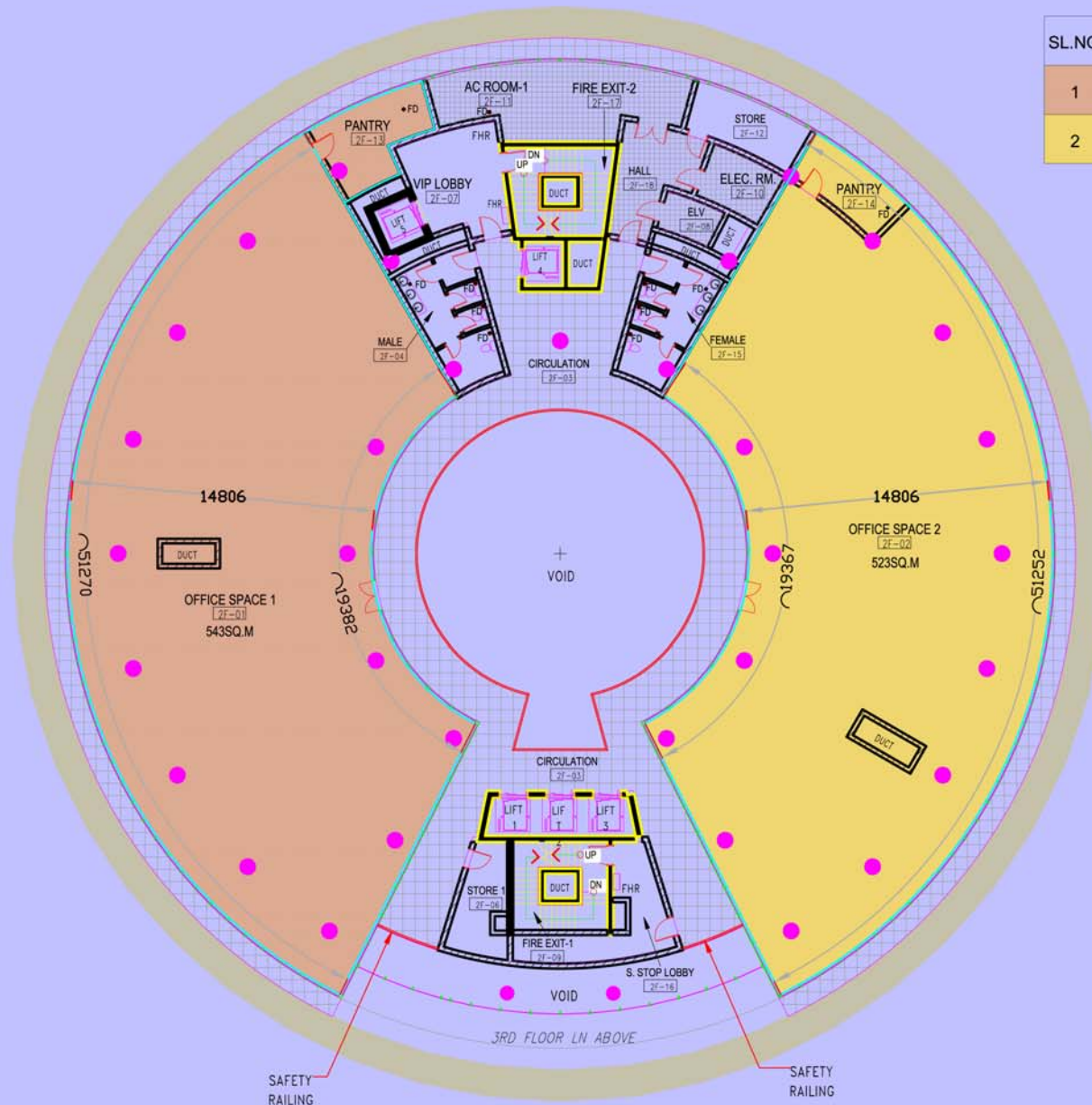
SCALE 1 / 100 DRN.BY SCR

DATE 09-02-13 CKD.BY RV

D:\GHIGATH OFFICE BLDG\PRESENTATION 06-02-13

REV.NO	DATE	REVISION

SL.NO.	DESCRIPTION	AREA-SQ.M
1	OFFICE SPACE 1	543
2	OFFICE SPACE 2	523



## SECOND FLOOR PLAN

  
**Ghanem Al Thani Holdings WLL**  
 P.O.BOX-5319 - DOHA-QATAR  
 TEL-44428201 - FAX-44445248

**GHANEM HOLDINGS OFFICE BUILDING**

**TITLE**  
**SECOND FLOOR PLAN**

**PROJ.NO.** 00000 **DRG.NO.** A-A1-IF-06

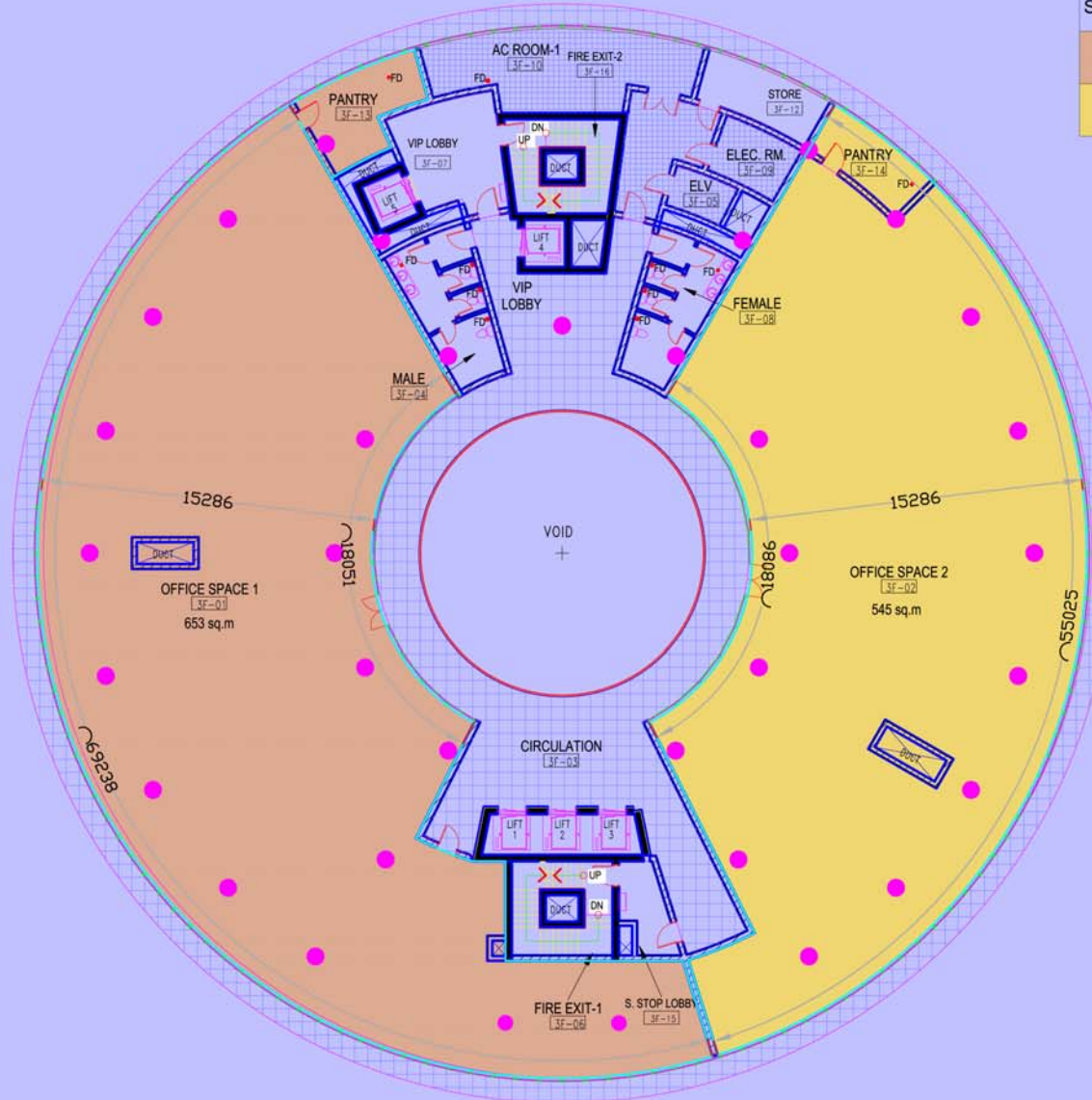
**SCALE** 1 / 100 **DRN.BY** SCR

**DATE** 09-02-13 **CKD.BY** RV

**D:\GHIGATH OFFICE BLDG\PRESENTATION 06-02-13**

REV.NO	DATE	REVISION

SL.NO.	DESCRIPTION	AREA-SQ.M
1	OFFICE SPACE 1	653
2	OFFICE SPACE 2	545



### THIRD FLOOR PLAN



*Ghanem Al Thani Holdings WLL*

P.O.BOX-5319 - DOHA-QATAR  
TEL-44428201 - FAX-44445248

#### GHANEM HOLDINGS OFFICE BUILDING

TITLE  
**THIRD FLOOR PLAN**

PROJ.NO. 00000 DRG.NO. A-A1-IF-07

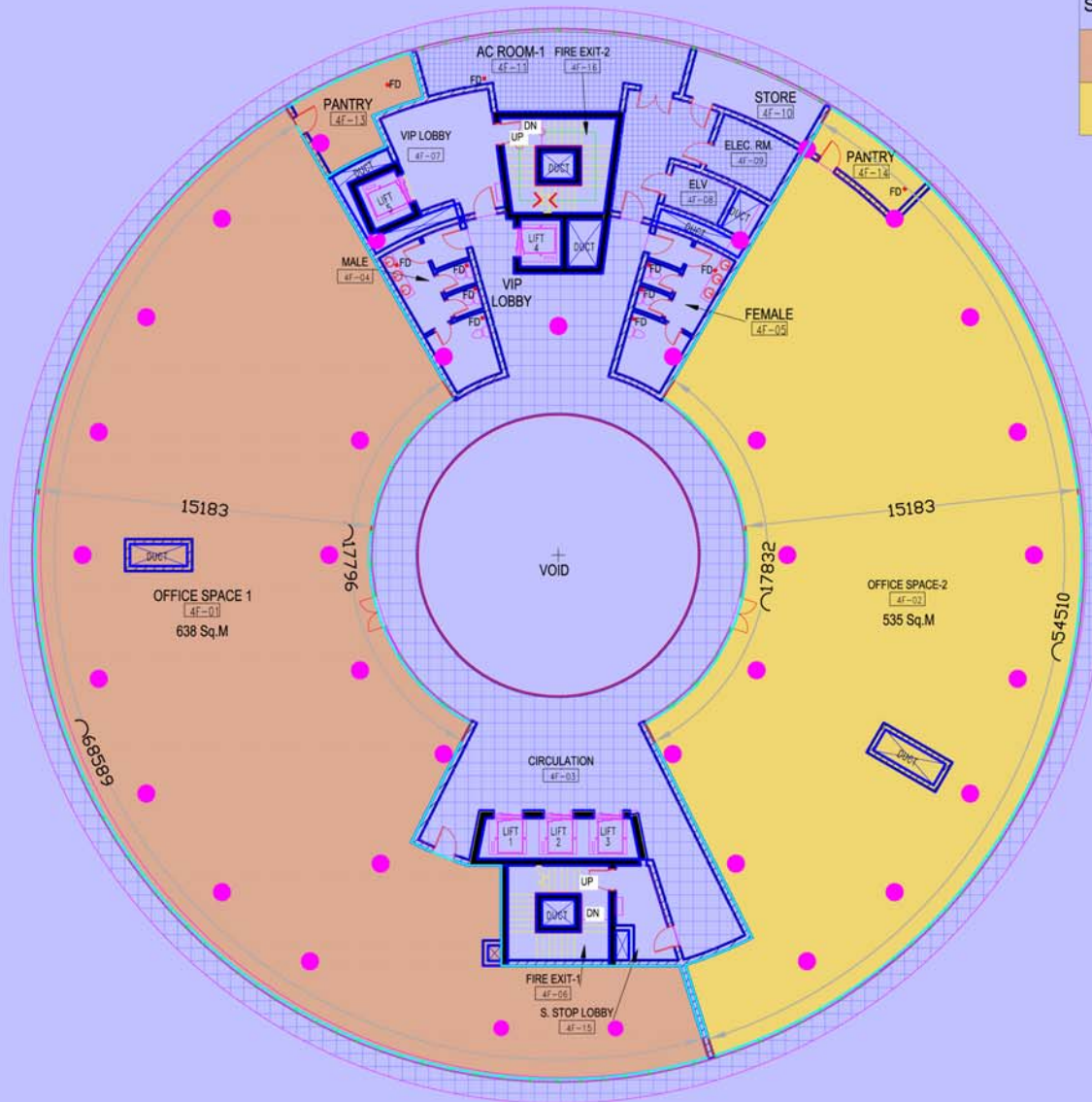
SCALE 1 / 100 DRN.BY SCR

DATE 09-02-13 CKD.BY RV

D:\GHIGATH OFFICE BLDG\PRESENTATION 06-02-13

REV.NO	DATE	REVISION

SL.NO.	DESCRIPTION	AREA-SQ.M
1	OFFICE SPACE 1	638
2	OFFICE SPACE 2	535



### FOURTH FLOOR PLAN



*Ghanem Al Thani Holdings WLL*

P.O.BOX-5319 - DOHA-QATAR  
TEL-44428201 - FAX-44445248

**GHANEM HOLDINGS OFFICE BUILDING**

**TITLE**  
**FOURTH FLOOR PLAN**

PROJ.NO. 00000 DRG.NO. A-A1-IF-08

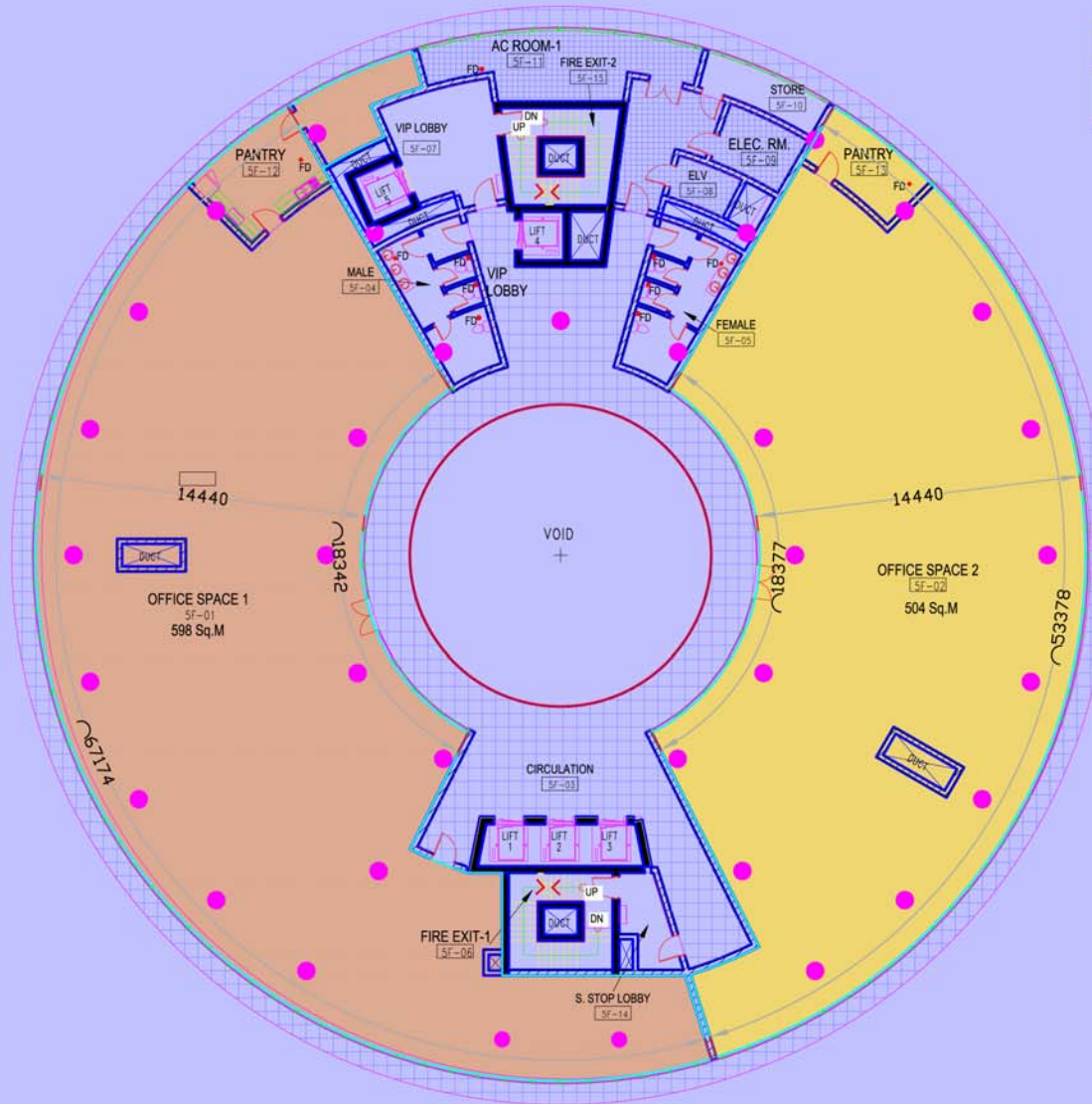
SCALE 1 / 100 DRN.BY SCR

DATE 09-02-13 CKD.BY RV

D:\GHIGATH OFFICE BLDG\PRESENTATION 06-02-13

REV.NO	DATE	REVISION

SL.NO.	DESCRIPTION	AREA-SQ.M
1	OFFICE SPACE 1	598
2	OFFICE SPACE 2	504



### FIFTH FLOOR PLAN



*Ghanem Al Thani Holdings WLL*

P.O.BOX-5319 - DOHA-QATAR  
TEL-44428201 - FAX-44445248

**GHANEM HOLDINGS OFFICE BUILDING**

**TITLE**  
**FIFTH FLOOR PLAN**

**PROJ.NO.** 00000 **DRG.NO.** A-A1-IF-09

**SCALE** 1 / 100 **DRN.BY** SCR

**DATE** 09-02-13 **CKD.BY** RV

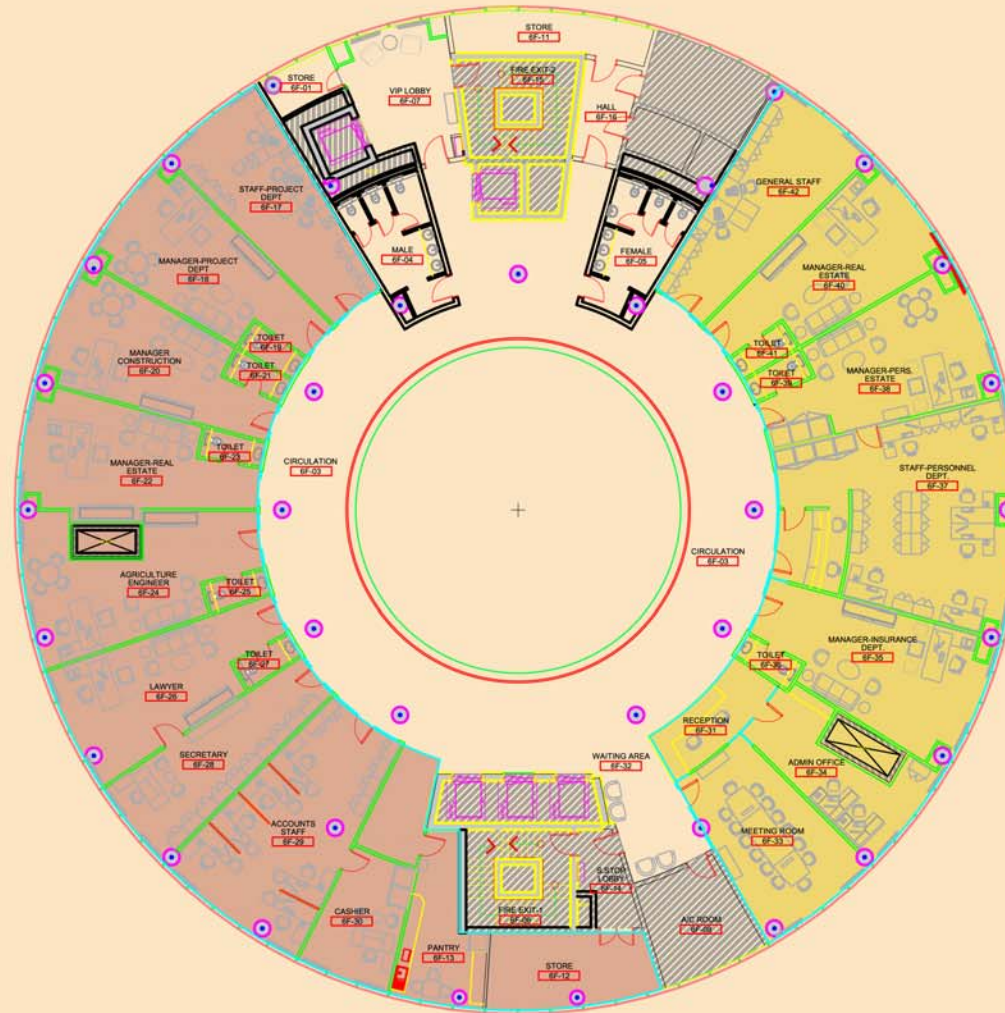
**D:\GHIGATH OFFICE BLDG\PRESENTATION 06-02-13**

REV.NO	DATE	REVISION

SL.NO.	DESCRIPTION	AREA-SQ.M
1	OFFICE SPACE 1	453
2	OFFICE SPACE 2	363

RESERVED FOR GHANEM HOLDINGS

RESERVED FOR GHANEM HOLDINGS



### SIXTH FLOOR PLAN



*Ghanem Al Thani Holdings WLL*

P.O.BOX-5319 - DOHA-QATAR  
TEL-44428201 - FAX-44445248

#### GHANEM HOLDINGS OFFICE BUILDING

TITLE  
**SIXTH FLOOR PLAN**

PROJ.NO. 00000    DRG.NO. A-A1-IF-10

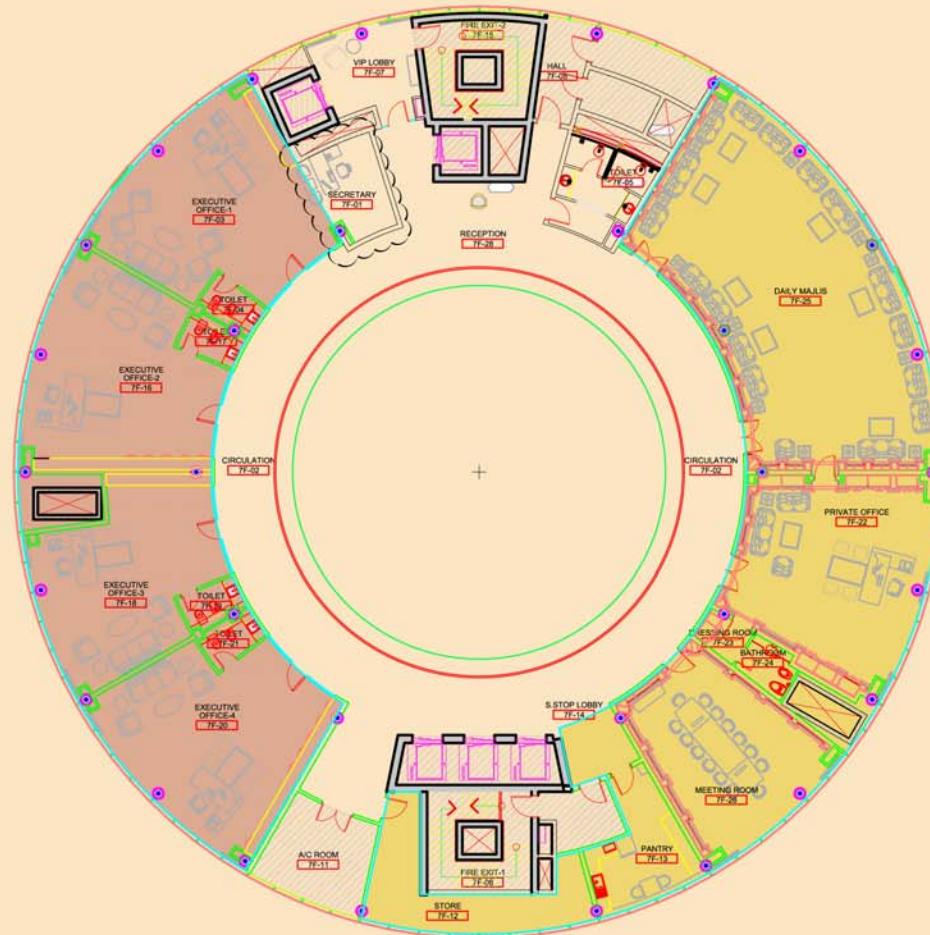
SCALE 1 / 100    DRN.BY SCR

DATE 09-02-13    CKD.BY RV

D:\GHIGATH OFFICE BLDG\PRESENTATION 06-02-13

REV.NO	DATE	REVISION

SL.NO.	DESCRIPTION	AREA-SQ.M
1	OFFICE SPACE 1	285
2	OFFICE SPACE 2	340



RESERVED FOR GHANEM HOLDINGS

### SEVENTH FLOOR PLAN



*Ghanem Al Thani Holdings WLL*

P.O.BOX-5319 - DOHA-QATAR  
TEL-44428201 - FAX-44445248

**GHANEM HOLDINGS OFFICE BUILDING**

**TITLE SEVENTH FLOOR PLAN**

PROJ.NO. 00000 DRG.NO. A-A1-IF-11

SCALE 1 / 100 DRN.BY SCR

DATE 09-02-13 CKD.BY RV

D:\GHIGATH OFFICE BLDG\PRESENTATION 06-02-13

REV.NO	DATE	REVISION